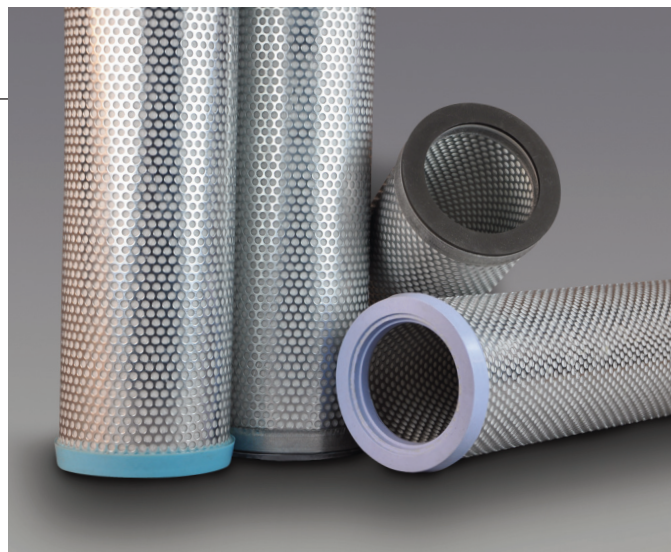


FibrCeptor™ FF

Depth Microglass Coalescers

Remove sub-micronic particles and aerosolized liquids from air and gas streams using the FibrCeptor FF. The quality of these process streams impacts emissions, productivity, and product quality. Designed as a polishing filter, the FibrCeptor FF utilizes an epoxy bound microglass casting to coalesce at the highest efficiencies. As a part of a well designed gas treatment system, the FibrCeptor FF will ensure clean, dry air/gas to your process helping to maintain optimum operational metrics.



THE BOTTOM LINE

- The Right Choice for the Right Application**
 An economical alternative to expensive pleated and engineered depth coalescers for applications with small aerosol concentrations or high temperature requirements. Provides superior efficiency and compatibility at a sensible price point.
- Structural Integrity**
 The FibrCeptor FF is reinforced with a steel core and outer support layers. Whether flowing in the normal flow direction, or back flowing, the structural integrity of this product will help ensure that your process equipment is not damaged by debris launched when less robust elements collapse or burst in service.
- Common Sizes and End Cap Styles**
 Easy installation in existing vessels without modifications. Saves costly downtime and maintenance expenses associated with vessel modifications.

APPLICATIONS

These applications typically have lower volumes with small concentrations of contaminants making them sensible places to use the FibrCeptor FF.

- Plant Air and Instrument Gas
- Vent and Exhaust Systems
- Pre-filtered Fuel Gas and Seal Gas

AVAILABLE END CAPS

	Molded Silicone ¹	Steel w/ Elastomer Gaskets
FF-12		✓
FF-24		✓
FF-36		✓
FF-312	✓	✓
FF-324	✓	✓
FF-336	✓	✓
FF-540	✓	✓

SPECIFICATIONS

MATERIALS

- COALESCING MEDIA** Unicast microglass
- DRAIN LAYER** fiberglass
- CORE** steel (galvanized or tin plated)
- INNER & OUTER SUPPORTS** steel (galvanized or tin plated)
- END CAPS** molded silicone¹
- GASKETS** integral to silicone end cap
- OPTIONS** S.S. hardware, galvanized steel end caps, gasket materials

OPERATING DATA

Max Temp. [F]	Max D.P. ² [psid]
350	100

- Recommended change-out DP is 8 psid**
- Normal flow direction is inside to outside**

NOMINAL DIMENSIONS

Model	O.D. [in.]	I.D. [in.]	Length [in.]
FF-12	3.55	2.0	12
FF-24	3.55	2.0	24
FF-312	4.55	3.24	12
FF-324	4.55	3.24	24
FF-336	4.55	3.24	36
FF-540	6.12	4.38	40

SURFACE AREA

The FibrCeptor FF is a depth style coalescer. If surface area is a deciding factor in your specific application please contact the factory, as many coalescing applications are best addressed with a depth style coalescer rather than one with high surface area. You can also consider the FibrCeptor™ FFP or one of our pleated coalescer products such as the p-Ceptor™ or j-Ceptor™.



A Name You Know...Filters You Can Trust™

perryequipment.com

FibrCeptor™ FF Depth Microglass Coalescers

PARTICLE RETENTION

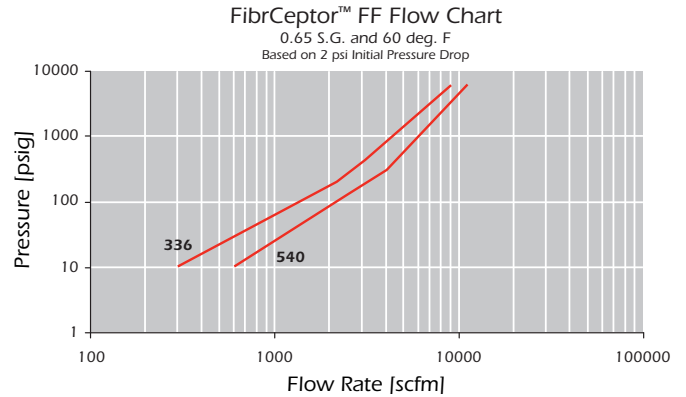
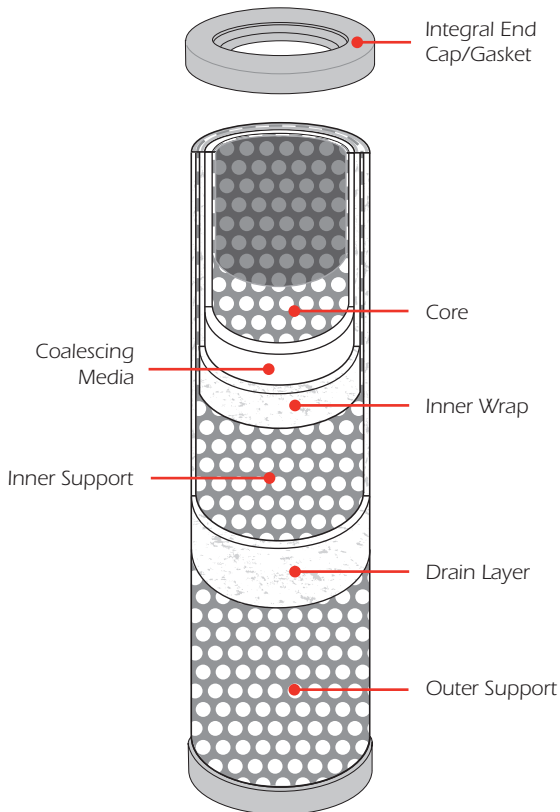
Grade	Coalescing Efficiency 0.3 to 0.6 Micron Particles	Maximum Oil Carry Over [†] ppm w/w	Micron Rating
0.1	99.97	0.008	0.1
0.3	98.5	0.2	0.5

REPLACEMENT OPTION FOR

- Anderson
- Gardner & Clark
- Jonell
- Nowata
- Parker Finite
- Others

VESSELS

- PECO Series 77V
- Other reverse flow coalescers

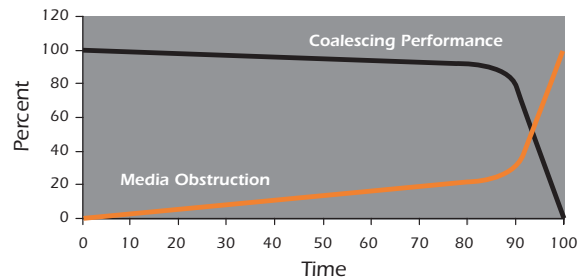


Maximum Incoming Aerosol Rate³

Size 336: 25 gpd/element

Size 540: 37 gpd/element

Effects of Media Obstruction on Coalescing Performance



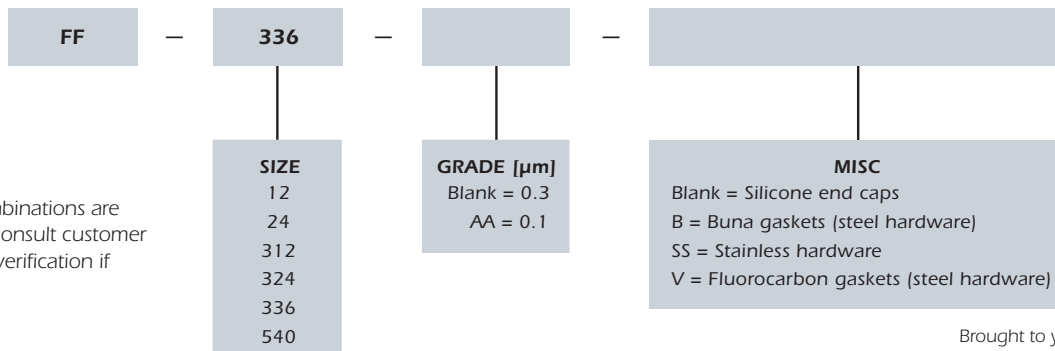
Dirt Holding

Reverse flow coalescers are designed for applications that contain a minimal amount of solid particulate. As a result, performance of coalescers will diminish as the coalescing media becomes obstructed with particulate. Therefore, when using the FibrCeptor FF it is recommended that a pre-filter be utilized if the gas contains more than trace amounts of particulate.

NOTES

1. Do not use in H₂S service > 5%.
2. Max. DP may be limited by vessel manufacturer's design.
3. Installed in a PECO designed vessel.
4. Tested per ADF-400 at 40 ppm inlet.

ORDERING INFORMATION



- Not all combinations are available. Consult customer service for verification if necessary.



Wolters Industrial Park / P.O. Box 640 / Mineral Wells, TX 76068
Phone 940.325.2575 / Fax 940.325.4622 / perryequipment.com
Email PECOElements@PECOFacet.com

Brought to you by PECOFacet
a CLARCOR company

© 2009 PECOFacet
PECOFacet has a policy of continuous product research and development and reserves the right to change design and specifications without notice.
Terms and Conditions of Sale can be accessed at www.pecofacet.com