

j-Ceptor™ 640

Pleated Microglass Coalescers

Replacement Option for Jonell Style Pleated Gas/Liquid Coalescers

Utilizing a pleated microglass media, the j-Ceptor 640 is designed to remove submicronic aerosolized liquids from air and gas streams. Installed in a reverse flow coalescing vessel this economy grade coalescer is a replacement option for most 640 style coalescers configured with external o-ring bottom seals. A heavy duty steel handle is installed on the top end cap for ease of installation and removal.

No vessel modifications required.

See what a difference you can make by converting today.

THE BOTTOM LINE

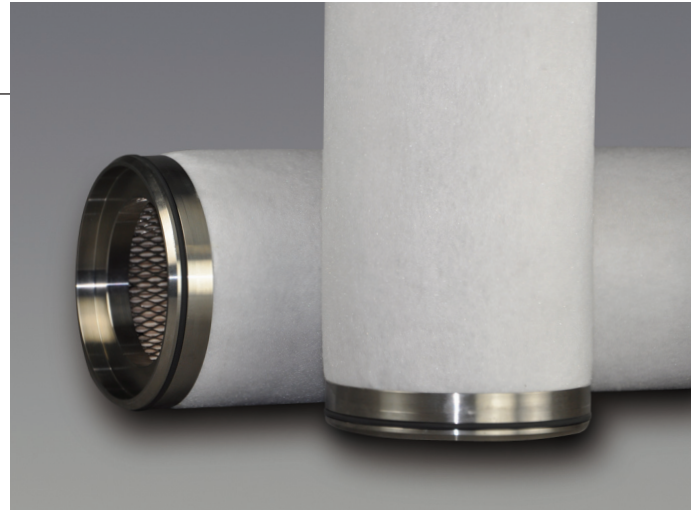
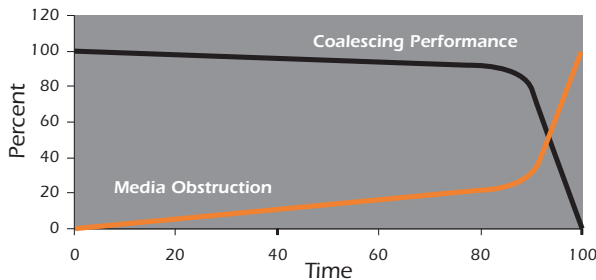
The Choice is Yours

PECOFacet is the industry leader in gas/liquid coalescing products. Don't get locked into a single source. Adding PECO Facet to the supplier list for all your gas/liquid coalescing needs will ensure your access to the best products at competitive prices. j-Ceptor 640 elements are made with quality materials in an ISO certified manufacturing environment. Performance and structural integrity are backed by a no-nonsense factory warranty. Send us the manufacturer model number and we'll do the rest.

DIRT HOLDING CAPACITY

Reverse flow coalescers are designed for applications that contain a minimal amount of solid particulate. As a result, performance of coalescers diminishes as the coalescing media becomes obstructed with particulate. Therefore, it is recommended that a pre-filter be utilized if the gas contains more than trace amounts of particulate.

Effects of Media Obstruction on Coalescing Performance



SPECIFICATIONS

MATERIALS

- **COALESCING MEDIA** pleated microglass
- **SUPPORT MEDIA** pleated cellulose
- **DRAIN LAYER** non-woven polymeric
- **OUTER SUPPORT & CORE** stainless steel
- **END CAPS** stainless steel
- **O-RING** buna-n
- **OPTIONS** o-ring materials

OPERATING DATA

Max. Temp. [F]	Max. D.P. ¹ [psid]
240	75

- Recommended change-out DP is 15 psid.
- Normal flow direction is inside to outside.

NOMINAL DIMENSIONS

Model	O.D. [in.]	I.D. [in.]	Length [in.]
PMGRF-640	6.0	4.0	40

APPLICATIONS

- **Natural Gas Transmission**
Station discharge, fuel gas, meters
- **Natural Gas Processing**
Treating and dehydration tower inlets and overheads, fuel gas, meters
- **Natural Production and Gathering**
Compressor discharge
- **Natural Gas Distribution**
M&R station
- **Refinery**
Compressor discharge, fuel gas, tower overheads
- **Power Generation**
Turbine fuel gas



A Name You Know...Filters You Can Trust™

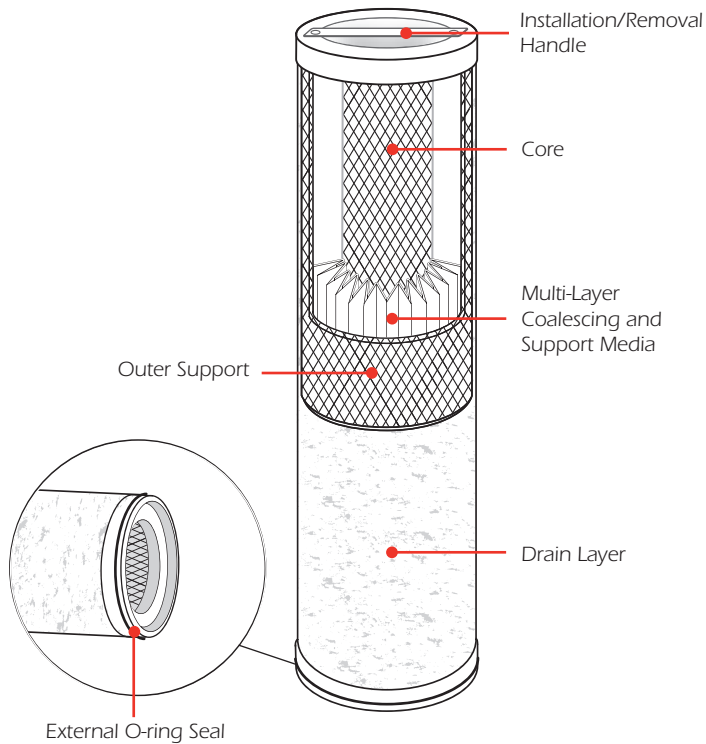
perryequipment.com

j-Ceptor™ 640 Pleated Microglass Coalescers

Replacement Option for Jonell Style Pleated Gas/Liquid Coalescers

PARTICLE RETENTION

- Grade [µm]: 0.3



NOTES

- Max. D.P. may be limited by the vessel manufacturer's design.

REPLACEMENT OPTION FOR

- Jonell JPMG 40256 reverse flow pleated coalescers series
- Others

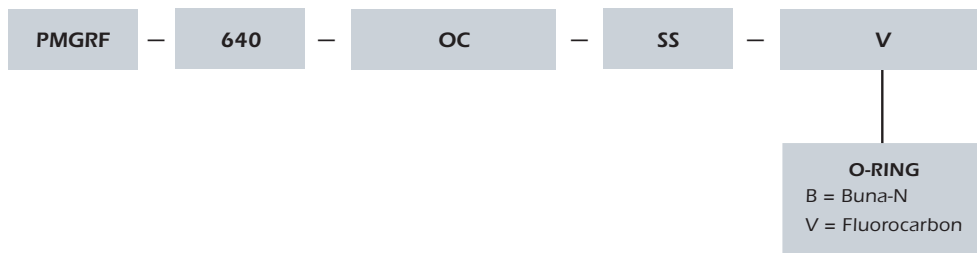
VESSELS

- Vessels manufactured to be compatible with 640 style pleated coalescing elements with external o-ring seal.
- Pall reverse flow coalescers

UPGRADES

- When liquid contaminant loads are heavy consider upgrading to an element with fluoro-carbon treated microglass media, such as the p-Ceptor™ 640.

ORDERING INFORMATION



Wolters Industrial Park / P.O. Box 640 / Mineral Wells, TX 76068
Phone 940.325.2575 / Fax 940.325.4622 / perryequipment.com
Email PECOElements@PECOFacet.com

Brought to you by PECOFacet
a CLARCOR company

© 2009 PECOFacet
PECOFacet has a policy of continuous product research and development and reserves the right to change design and specifications without notice.
Terms and Conditions of Sale can be accessed at www.pecofacet.com

EL-JC-TD-04 10/09