

LifeASSURE™ BDA020 & BGA020 Series Sterilizing Grade Filters

0.2 µm rated filters for bottled water & beverage microbiological stability

LifeASSURE™ BDA020 and BGA020 series filters help bottled water and other beverage processors meet the highest standards for microorganism control. Combined with 3M Purification Inc.'s range of particle control and prefiltration filter cartridges, BDA020 and BGA020 series filters offer bottlers a complete solution for rigorous contaminant control while maintaining long service life and low operating costs. BDA series filters were designed for standard water conditions while the BGA series were designed for water containing very fine sub-micronic silt.

Durable Design

The LifeASSURE BDA020 and BGA020 series filter membrane and cartridge design innovations result in a durable filter cartridge, capable of secure operation through numerous cycles of hot water sanitation, steam sterilization, and standard chemical based cleaning and sanitation.

Advanced Technology

Highly Asymmetric Membrane

LifeASSURE BDA020 & BGA020 series filters incorporate a novel dual-layer membrane with a high degree of asymmetry (Figure 1. on the next page). When viewed in cross-section, the membrane contains larger pores on the upstream surface that gradually taper to smaller pores towards the down stream surface. Compared to conventional membranes common in the market with a symmetric pore structure, this structure provides greater contaminant capacity, since it presents greater open spaces (void volume) in which to retain

most common contaminants in water. This increase in capacity leads directly to longer service life. In addition, the asymmetric structure provides less resistance to flow, resulting in a lower pressure drop when compared at a constant flow rate to typical competitive filters, allowing a user to employ fewer LifeASSURE BDA020 and BGA020 series filters for any given flow rate.



Applications

LifeASSURE™ BDA020 and BGA020 Series filters are optimized for Food & Beverage applications requiring sterilizing 0.2 µm retention rated performance.

- Bottled Water
- Soft Drinks
- Process Water
- Intermediates & Ingredients
- Syrups
- Dyes & Flavors

Features & Benefits

Validated 0.2 µm absolute rated membrane

- Reliable sterilizing filtration

Asymmetric dual-layer Polyethersulfone membrane

- High capacity and service life to help maximize economy

Advanced Pleat Technology Construction (BDA020 series only)

- Allows superior fluid and contaminant access to filter surface area for greatest service life and flow compared to standard pleating

The LifeASSURE™ BDA020, BGA020 and BNA020 Series filters fully comply with the requirements of the US Pure Food, Drug and Cosmetic Act for food contact and applicable US Regulations and Regulation (EC) 1935/2004.*

- Eases regulatory concerns

*Refer to Technical Support Guide for additional information.

LifeASSURE™ BDA020 & BGA020 Series Sterilizing Grade Filters

Advanced Pleat Technology Design

LifeASSURE™ BDA020 series filters feature Advanced Pleat Technology (APT) design for extended service life. This design technology helps to maximize the useful surface area of the filter while maintaining open flow paths between the media pleats (refer to Figure 2.). By employing the APT design, the LifeASSURE BDA020 series filter can help provide lower pressure drops, longer service life, and lower overall operational costs. The BGA series employs a conventional pleat design which can help withstand reverse water-hammer from rapidly closing valves in downstream filling equipment.

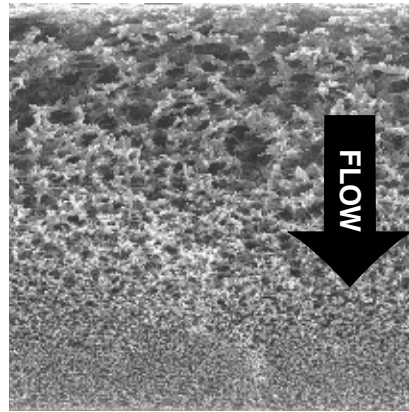


Figure 1. SEM Photograph Showing LifeASSURE™ BDA020 and BGA020 Series Filter Membrane Cross-Section

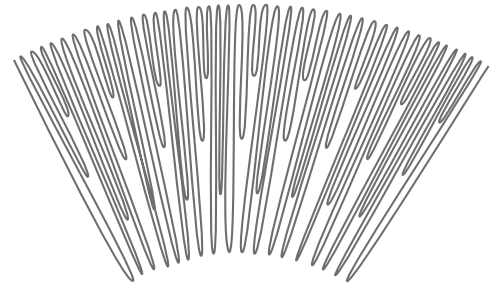


Figure 2. - Advanced Pleat Technology

Novel Media Support Design

LifeASSURE BDA020 series filters cartridge employ a design that results in higher beverage flow versus pressure drop compared to common competitive filters. This 3M Purification development combines the high flowing LifeASSURE BDA020 series filter membrane with special support layers upstream and downstream of the membrane. When combined with the previously mentioned APT, this feature greatly increases flow per cartridge, and results in lower overall operational costs as compared to filters without these features.

Advanced Performance Service Life

In the majority of beverage applications, the final membrane filter is used in a continuous (as opposed to a batch) operation. Its service life is measured either by the volume filtered, or the number of days in service, before becoming permanently blocked. Filters that provide longer service life not only reduce direct operational costs, but also reduce indirect filter costs as well (filter change-out/installation labor, downtime between change-outs, filter flushing, etc.). The LifeASSURE BDA020 series filter cartridge's combination of highly asymmetric membrane, APT design, and novel upstream & downstream supports all work together to help maximize the volume of beverage that can be processed.

Table 1. - Comparative Flow Rates (10" 0.2 µm Rated Filters)

	Microorganism	Retention Level
BDA020 & BGA020	<i>Brevundimonas diminuta</i>	Complete
BDA020 & BGA020	<i>Pseudomonas aeruginosa</i>	Complete

Absolute Microbiological Control

The primary purpose of a membrane filter cartridge in bottled water and beverage processing is to effectively control even the smallest microorganisms. LifeASSURE series filters provide superior retention of common spoilage microorganisms, even at challenge concentrations that far exceed those experienced by most beverage producers. The LifeASSURE BDA020 and BGA020 series cartridge membrane has been validated for complete retention of *Brevundimonas diminuta* (*B.diminuta*) (ATCC 19146) at a concentration of 10^7 CFU/cm² or greater.

Fast Flow Rates at Low Pressure Drops

3M Purification has combined three key technological advances to provide a fast flow rate per unit of pressure drop. These three technologies, APT design, a novel upstream and downstream support design, and a highly asymmetric microporous membrane, afford users with faster process flow rates using fewer filters as compared to common alternative filters. When installed in an existing system with a fixed flow rate, LifeASSURE BDA020 series filters exhibit a lower pressure drop compared to common alternative filters. Since filter change-out is usually tied to a terminal differential pressure drop (typically between 20 and 35 psid), employing filters that exhibit a lower initial pressure drop can result in longer filter service life. Alternatively, in a system when determining the number of filters needed to provide a desired flow rate at a given pressure drop, faster flowing filters will result in smaller, more economical systems.

Prefiltration Selections

Many bottling applications employ a prefilter and final filter in series to achieve maximum performance and economy. Prefilters are used to protect and extend the life of more expensive final filters. 3M offers a number of prefilter choices: Betafine™ XL series pleated filter cartridges, Betapure™ NT-T series depth filter cartridges and LifeASSURE™ BLA series membrane filter cartridges. Betafine XL series cartridges (Literature 70-0201-8686-5) feature 3M’s APT design maximizing the accessible filter area and supplying exceptionally high flow rates. Those preferring depth-style filters can select from 3M’s Betapure NT-T series prefilter family (Literature 70-0201-8720-2) which employs an advanced media design that enhances flow. For additional bioburden control, 3M’s LifeASSURE BLA series filter cartridges (Literature 70-0201-8712-9), featuring dual-zone membrane, are designed to deliver ultimate final membrane protection and bioburden reduction.

LifeASSURE™ BDA020 & BGA020 Membrane Design

LifeASSURE BDA020 series filters contain two layers of PES membrane. The upstream layer is rated at 0.65 micron while the downstream layer is rated at 0.2 micron. Our testing has shown this arrangement results in long service life while maintaining the necessary retention of microorganisms. However, in circumstances where very fine silt may result in lower service life, the LifeASSURE BGA020 is offered. This filter employs a 0.45 micron rated upstream membrane layer to better retain this fine silt before it reaches the 0.2 micron rated membrane layer. Furthermore, the LifeASSURE BGA020 series filter employs a conventional pleating design, which helps provide resistance to “water hammer” conditions in some filling systems than BDA series.

Operating Parameters & Specifications

Materials of Construction	
Membrane	Dual layer Polyethersulfone
Media Support Layers	BDA: 0.65 micron upstream/0.2 micron downstream
	BGA020: 0.45 micron upstream/0.2 micron downstream
Inner Core, Outer Cage, End Cap Adapters	Polypropylene
Gasket & O-ring Options	Various polymers available
Encapsulated Adapter Reinforcing Ring	Polyethersulfone
Operating Conditions	
Typical Water Flow Rate at 25 °C	2 gpm/psid (11 lpm/100 mbar)
Maximum Forward Pressure Differential	80 psid @ 77 °F (5.5 bar @ 25 °C) 35 psid @ 194°F (2.4 bar @ 90°C)
Maximum Reverse Pressure Differential	10 psid @ 77 °F (0.689 bar @ 25 °C)
Maximum Forward Flow Diffusion at 25 °C per 10" filter	33 cc/min @ 40 psig (2.75 bar)
Maximum Hot Water Sanitation Temperature	85 °C
Maximum Steam Temperature	126 °C
Maximum Peracetic Acid Exposure	1% (10,000 ppm)
Cartridge Dimensions	
Filtration Surface Area	7.2 ft ² (0.67 m ²)
Outer Diameter	2.75" (70 mm)
Nominal Length	10" (254 mm), 20" (508 mm), 30" (762 mm), 40" (1016 mm)

LifeASSURE™ BDA020 Series Ordering Guide¹

Cartridge Code	Configuration Code	Length Length Code	End Modification Code	Gasket/O-ring Material Code
BDA020	F	01 - 10"	B - 226 O-ring & Spear (Code 7)*	A - Silicone
		03 - 30"	F - 222 O-ring & Flat Cap (Code 3)	C - EPR*

LifeASSURE™ BGA020 Series Ordering Guide¹

Cartridge Code	Configuration Code	Length Length Code	End Modification Code	Gasket/O-ring Material Code
BGA020	F	01 - 10"	B - 226 O-ring & Spear (Code 7)*	C - EPR*
		03 - 30"		

PLEASE NOTE: The Ordering Guide above is for reference only. Not all combinations are available. Please consult with your 3M Representative to determine the appropriate part number for your application.

*"B" end modification (226 O-ring connector and spear) and "C" O-ring options are NSF/ANSI Standard 61 listed.

1. Additional configurations may be available upon request.



This LifeASSURE™ BDA Series filter cartridge with the "C" O-ring option is tested and certified by WQA against NSF/ANSI Standard 61 for material safety only.

Cold Water Only: Install this product in accordance with the instructions provided by the housing manufacturer.



Technical Information:

The technical information, guidance, and other statements contained in this document or otherwise provided by 3M are based upon records, tests, or experience that 3M believes to be reliable, but the accuracy, completeness, and representative nature of such information is not guaranteed. Such information is intended for people with knowledge and technical skills sufficient to assess and apply their own informed judgment to the information. No license under any 3M or third party intellectual property rights is granted or implied with this information.

Product Selection and Use:

Many factors beyond 3M's control and uniquely within user's knowledge and control can affect the use and performance of a 3M product in a particular application. As a result, customer is solely responsible for evaluating the product and determining whether it is appropriate and suitable for customer's application, including conducting a workplace hazard assessment and reviewing all applicable regulations and standards (e.g., OSHA, ANSI, etc.). Failure to properly evaluate, select, and use a 3M product and appropriate safety products, or to meet all applicable safety regulations, may result in injury, sickness, death, and/or harm to property.

Warranty, Limited Remedy, and Disclaimer:

Many factors beyond 3M's control and uniquely within user's knowledge and control can affect the use and performance of a 3M product in a particular application. User is solely responsible for evaluating the 3M product and determining whether it is fit for a particular purpose and suitable for user's method of application. Unless an additional warranty is specifically stated on the applicable 3M product packaging or product literature, 3M warrants that each 3M product meets the applicable 3M product specification at the time 3M ships the product. 3M MAKES NO OTHER WARRANTIES OR CONDITIONS, EXPRESS OR IMPLIED, INCLUDING, BUT NOT LIMITED TO, ANY IMPLIED WARRANTY OR CONDITION OF MERCHANTABILITY OR FITNESS FOR A PARTICULAR PURPOSE OR ANY IMPLIED WARRANTY OR CONDITION ARISING OUT OF A COURSE OF DEALING, CUSTOM OR USAGE OF TRADE. If the 3M product does not conform to this warranty, then the sole and exclusive remedy is, at 3M's option, replacement of the 3M product or refund of the purchase price.

Limitation of Liability

Except where prohibited by law, 3M will not be liable for any loss or damage arising from the 3M product, whether direct, indirect, special, incidental or consequential, regardless of the legal theory asserted, including warranty, contract, negligence or strict liability.



3M Purification Inc.
400 Research Parkway
Meriden, CT 06450
U.S.A.
Phone (800) 243-6894
(203) 237-5541
Fax (203) 630-4530
www.3Mpurification.com

Your Local Distributor:

3M, Betafine, Betapure and LifeASSURE are trademarks of 3M Company. All other trademarks are the property of their respective owners
© 2018 3M Company. All rights reserved.
70020211994 REV 0418sr